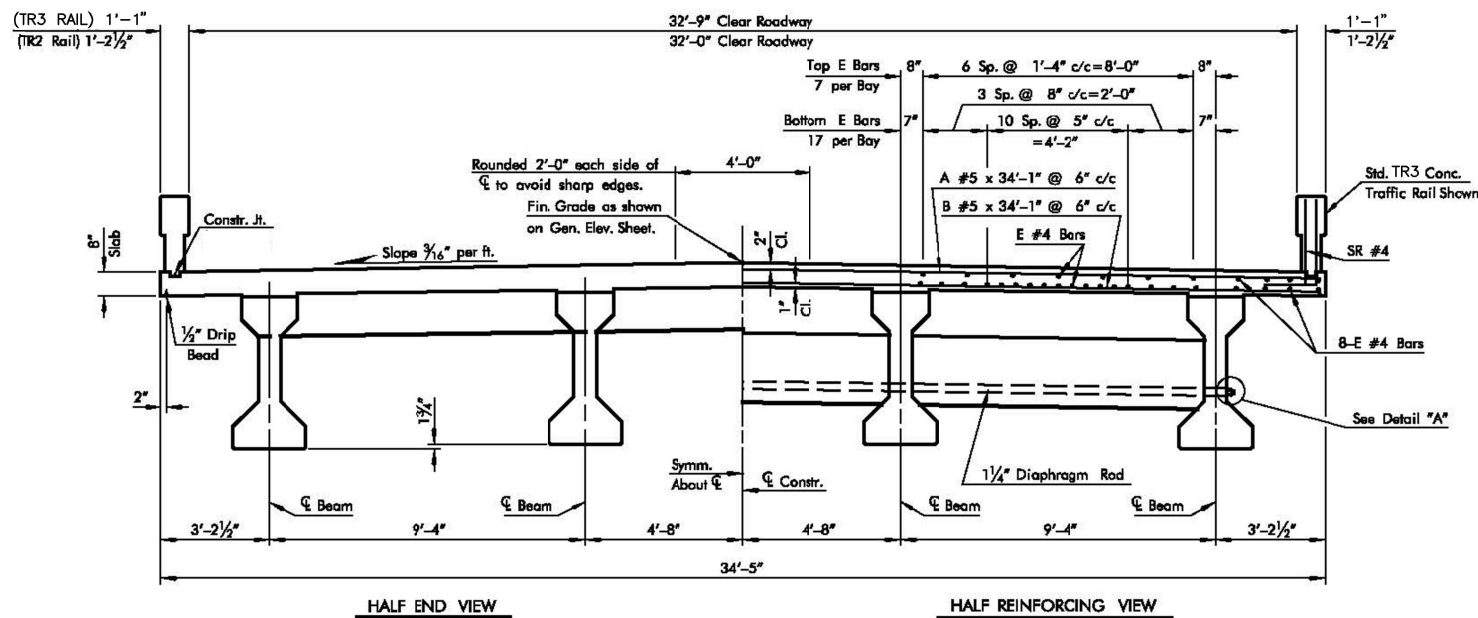


TYPICAL 26'-3" CLEAR ROADWAY SECTION
35' THRU 105' SPANS



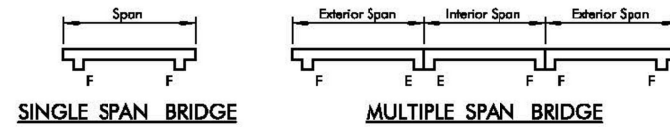
TYPICAL 32'-9" CLEAR ROADWAY SECTION
35' THRU 100' SPANS

Floor Note:

8" uniform slab thickness as shown, Class "AA" concrete, maximum aggregate 1 1/2" dia. All construction shall conform to the 2009 Oklahoma Standard Specifications. Surface of roadway shall slope 3/16" per foot each way from center line roadway. All exposed edges shall have 3/4" chamfer unless otherwise noted. Transverse reinforcing steel in the floor shall begin and end with A and B bars a maximum of 2" from end of concrete panels. All longitudinal reinforcing steel bars in top of slab shall be supported on approved continuous metal high chairs (CHC). The spacing of the metal chairs shall be a maximum of 4'-0" on centers. Bottom layer of reinforcing steel shall be supported on approved metal slab bolters (SB) spaced a maximum of 4'-0" on centers. Longitudinal bars shall begin and end 1" from ends of slab. Concrete in each span shall be poured in a continuous pour.

DESIGN DATA

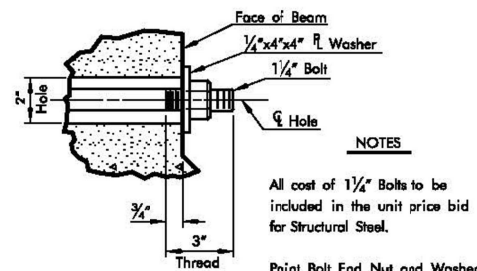
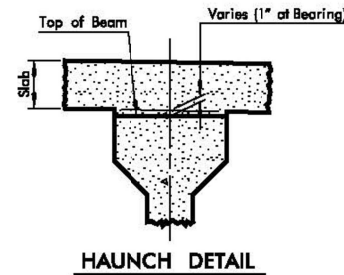
CONCRETE: CLASS "AA" 4,000 psi
 REINFORCING STEEL: (GR. 60) 60,000 psi
 STRUCTURAL STEEL: 36,000 psi
 LOADING: HS 20-44



NOTES: Structural Steel Quantities shown do not include quantities for Expansion Devices or Encased Sole Plate and Studs.

"SR" Reinforcing Steel for TR3 Concrete Traffic Rail shall be in place prior to pouring deck slab and shall be added to quantity of Reinforcing Steel, (Grade 60).

35' and 40' spans will not have intermediate diaphragms.



NOTES
 All cost of 1/4" Bolts to be included in the unit price bid for Structural Steel.
 Paint Bolt End, Nut and Washer with IZ-E-U (Section 730.02(a) of Standard Specifications).

TABLE OF QUANTITIES - 26'-3" CLEAR ROADWAY - 0° SKEW

SPAN	ONE INTERIOR SPAN			ONE EXTERIOR SPAN			SINGLE SPAN BRIDGE			P.C. BMS. Lin. Ft.
	CLASS "AA" CONC. Cubic Yards	REINF. STEEL LBS.	STR. STEEL LBS.	CLASS "AA" CONC. Cubic Yards	REINF. STEEL LBS.	STR. STEEL LBS.	CLASS "AA" CONC. Cubic Yards	REINF. STEEL LBS.	STR. STEEL LBS.	
35'	25.8	5450	1170	27.0	5810	1280	28.3	6000	1390	136.67
40'	29.4	6190	1170	30.5	6550	1280	31.9	6740	1390	156.67
45'	33.7	6970	1270	34.8	7330	1380	36.2	7520	1490	176.67
50'	37.2	7710	1270	38.4	8070	1380	39.7	8260	1490	196.67
55'	41.4	8410	1400	42.5	8840	1510	43.9	9030	1620	216.67
60'	45.0	9160	1400	46.1	9520	1510	47.5	9710	1620	236.67
65'	48.6	9960	1400	49.7	10320	1510	51.1	10510	1620	256.67
70'	52.2	10640	1400	53.3	11010	1510	54.7	11200	1620	276.67
75'	55.7	11380	1400	56.9	11750	1510	58.3	11940	1620	296.67
80'	60.0	12090	1590	61.2	12460	1700	62.5	12650	1810	316.67
85'	63.6	12830	1590	64.8	13200	1700	66.2	13390	1810	336.67
90'	67.2	13520	1590	68.4	13940	1700	69.8	14130	1810	356.67
95'	70.8	14260	1590	72.0	14620	1700	73.4	14810	1810	376.67
100'	74.5	15000	1590	75.6	15360	1700	77.0	15550	1810	396.67
105'	78.1	15680	1590	79.3	16040	1700	80.6	16240	1810	416.67

TABLE OF QUANTITIES - 26'-3" CLEAR ROADWAY - 30° SKEW

SPAN	ONE INTERIOR SPAN			ONE EXTERIOR SPAN			SINGLE SPAN BRIDGE			P.C. BMS. Lin. Ft.
	CLASS "AA" CONC. Cubic Yards	REINF. STEEL LBS.	STR. STEEL LBS.	CLASS "AA" CONC. Cubic Yards	REINF. STEEL LBS.	STR. STEEL LBS.	CLASS "AA" CONC. Cubic Yards	REINF. STEEL LBS.	STR. STEEL LBS.	
35'	25.9	5510	1290	27.3	5880	1410	28.5	6080	1530	136.17
40'	29.5	6290	1290	30.8	6620	1410	32.1	6820	1530	156.17
45'	33.8	7020	1400	35.2	7390	1530	36.4	7590	1650	176.17
50'	37.4	7760	1400	38.8	8130	1530	39.9	8330	1650	196.17
55'	41.5	8470	1550	42.9	8900	1680	44.1	9100	1800	216.17
60'	45.1	9210	1550	46.5	9580	1680	47.7	9780	1800	236.17
65'	48.7	10020	1550	50.1	10390	1680	51.3	10590	1800	256.17
70'	52.3	10700	1580	53.7	11070	1680	54.9	11270	1800	276.17
75'	55.9	11440	1580	57.3	11810	1680	58.5	12010	1800	296.17
80'	60.2	12150	1770	61.6	12520	1900	62.8	12720	2020	316.17
85'	63.8	12890	1770	65.2	13260	1900	66.4	13460	2020	336.17
90'	67.4	13570	1770	68.8	14000	1900	70.0	14200	2020	356.17
95'	71.0	14310	1770	72.4	14680	1900	73.6	14880	2020	376.17
100'	74.6	15060	1770	76.0	15430	1900	77.2	15630	2020	396.17
105'	78.2	15740	1770	79.5	16110	1900	80.9	16310	2020	416.17

TABLE OF QUANTITIES - 32'-9" CLEAR ROADWAY - 0° SKEW

SPAN	ONE INTERIOR SPAN			ONE EXTERIOR SPAN			SINGLE SPAN BRIDGE			P.C. BMS. Lin. Ft.
	CLASS "AA" CONC. Cubic Yards	REINF. STEEL LBS.	STR. STEEL LBS.	CLASS "AA" CONC. Cubic Yards	REINF. STEEL LBS.	STR. STEEL LBS.	CLASS "AA" CONC. Cubic Yards	REINF. STEEL LBS.	STR. STEEL LBS.	
35'	31.1	7580	1170	32.6	7890	1300	34.1	8180	1430	136.67
40'	35.5	8590	1170	36.9	8890	1300	38.5	9190	1430	156.67
45'	40.7	9710	1300	42.2	10020	1430	43.7	10320	1560	176.67
50'	45.0	10720	1300	46.5	11020	1430	48.0	11320	1560	196.67
55'	50.0	11750	1430	51.5	12060	1560	53.0	12360	1690	216.67
60'	54.3	12760	1430	55.8	13150	1560	57.3	13450	1690	236.67
65'	58.7	13850	1430	60.1	14160	1560	61.7	14450	1690	256.67
70'	63.0	14860	1430	64.5	15160	1560	66.0	15460	1690	276.67
75'	67.3	15860	1430	68.8	16170	1560	70.3	16460	1690	296.67
80'	72.4	16900	1620	73.9	17200	1750	75.5	17500	1880	316.67
85'	76.8	17900	1620	78.3	18210	1750	79.8	18510	1880	336.67
90'	81.1	18910	1620	82.6	19210	1750	84.2	19510	1880	356.67
95'	85.5	19910	1620	87.0	20220	1750	88.5	20520	1880	376.67
100'	89.8	20920	1620	91.3	21220	1750	92.9	21520	1880	396.67
105'	94.2	21920	1620	95.7	22230	1750	97.2	22530	1880	416.67

TABLE OF QUANTITIES - 32'-9" CLEAR ROADWAY - 30° SKEW

SPAN	ONE INTERIOR SPAN			ONE EXTERIOR SPAN			SINGLE SPAN BRIDGE			P.C. BMS. Lin. Ft.
	CLASS "AA" CONC. Cubic Yards	REINF. STEEL LBS.	STR. STEEL LBS.	CLASS "AA" CONC. Cubic Yards	REINF. STEEL LBS.	STR. STEEL LBS.	CLASS "AA" CONC. Cubic Yards	REINF. STEEL LBS.	STR. STEEL LBS.	
35'	31.3	7580	1290	32.9	8000	1440	34.5	8340	1580	136.17
40'	35.6	8580	1290	34.9	9000	1440	38.8	9340	1580	156.17
45'	40.8	9710	1430	42.4	10130	1580	44.0	10470	1730	176.17
50'	45.2	10720	1430	46.7	11130	1580	48.4	11470	1730	196.17
55'	50.2	11760	1580	51.8	12170	1730	53.4	12520	1880	216.17
60'	54.5	12760	1580	56.1	13270	1730	57.7	13610	1880	236.17
65'	58.9	13850	1580	60.4	14270	1730	62.1	14610	1880	256.17
70'	63.2	14860	1580	64.8	15280	1730	66.4	15620	1880	276.17
75'	67.5	15860	1580	70.0	16280	1730	70.7	16620	1880	296.17
80'	72.7	16900	1800	74.2	17320	1950	75.9	17660	2100	316.17
85'	77.0	17900	1800	78.6	18320	1950	80.3	18660	2100	336.17
90'	81.4	18910	1800	82.9	19320	1950	84.6	19670	2100	356.17
95'	85.7	19910	1800	87.3	20330	1950	89.0	20670	2100	376.17
100'	90.1	20920	1800	91.7	21330	1950	93.3	21680	2100	396.17
105'	94.4	21920	1800	96.0	22340	1950	97.7	22680	2100	416.17